



www.billbeall.com

1,750 - 5,900 SF : FOR LEASE

Kansas Station

3037 –3041 S. Kansas Expressway, Springfield, MO



HIGHLIGHTS

- 1,750 SF - 5,900 SF
- 3037 = 1,750 SF = \$2,042.00 Est. Monthly Payment
- 3039 = 1,750 SF = \$2,042.00 Est. Monthly Payment
- 3041 = 2,400 SF = \$2,800.00 Est. Monthly Payment
5,900 SF = \$6,884.00 Est. Monthly Payment



- Front Door Parking
- Zoned: General Retail
- CAM: +/- \$4.00/ SF
- Lease Rate: \$10.00 / SF

FOR ADDITIONAL INFORMATION CONTACT

Bill Beall Co., Inc.
2921 S. National Ave., Springfield, MO 65804
(417) 887-5535 email: beall@billbeall.com

Kansas Station

3037 –3041 S. Kansas Expressway, Springfield, MO



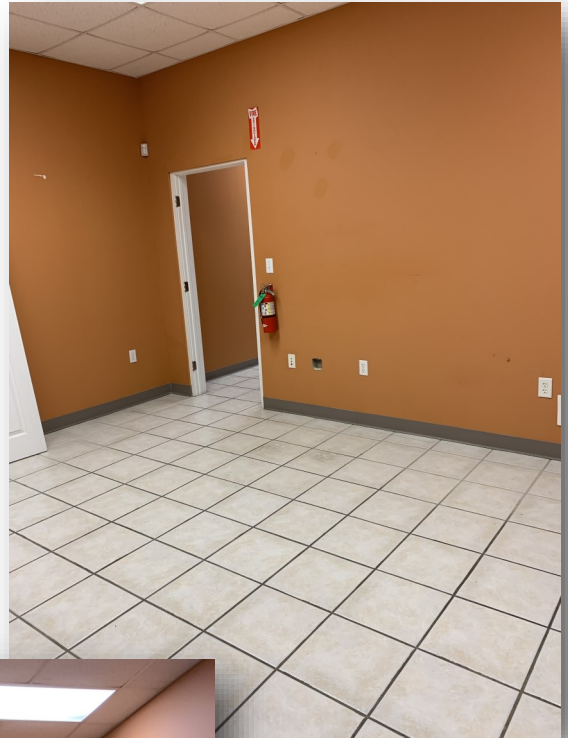
FOR ADDITIONAL INFORMATION CONTACT

Bill Beall Co., Inc.

2921 S. National Ave., Springfield, MO 65804

Kansas Station

3037 S. Kansas Expressway, Springfield, MO



FOR ADDITIONAL INFORMATION CONTACT

Bill Beall Co., Inc.

2921 S. National Ave., Springfield, MO 65804

Kansas Station

3039 S. Kansas Expressway, Springfield, MO



FOR ADDITIONAL INFORMATION CONTACT

Bill Beall Co., Inc.

2921 S. National Ave., Springfield, MO 65804

Kansas Station

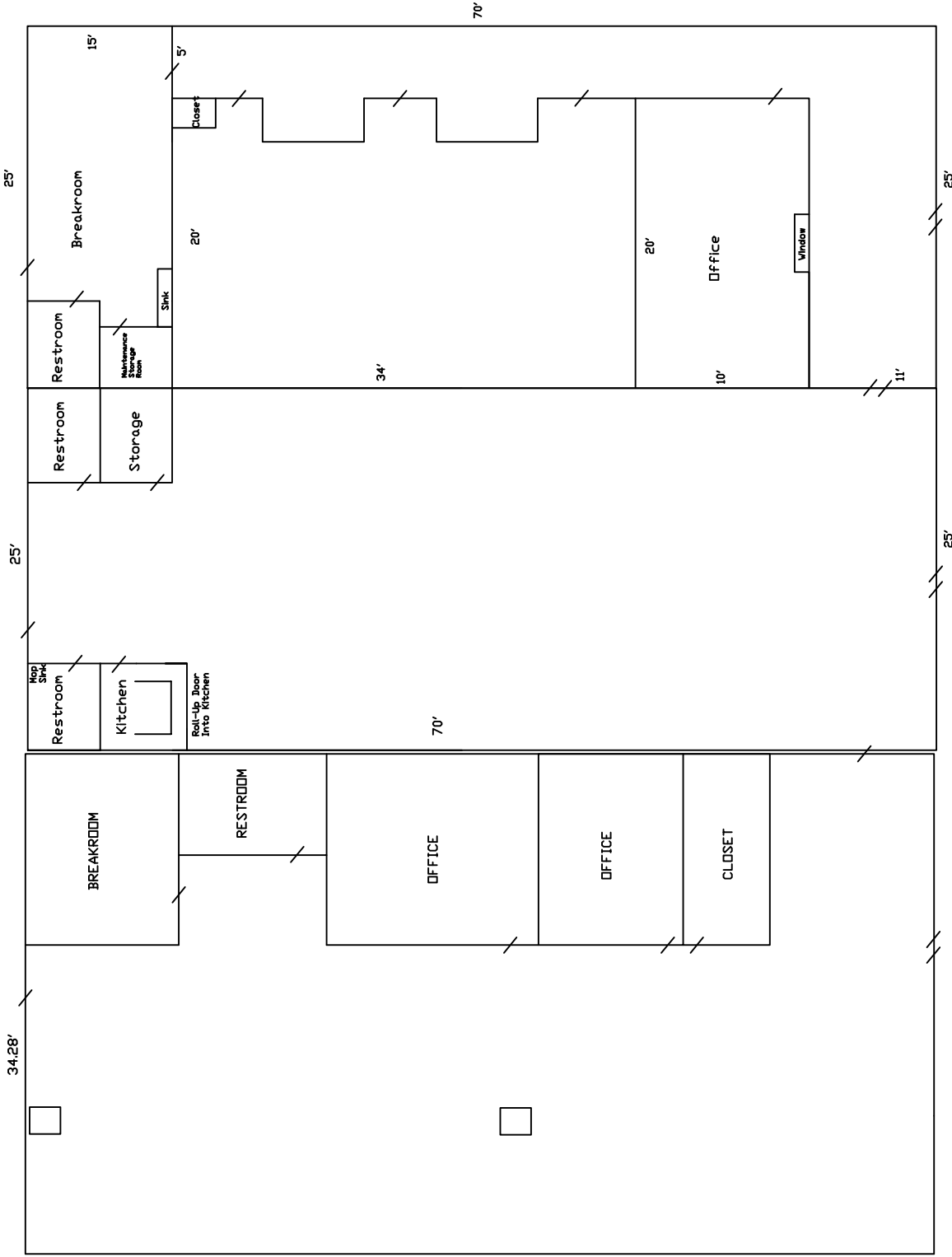
3041 S. Kansas Expressway, Springfield, MO



FOR ADDITIONAL INFORMATION CONTACT

Bill Beall Co., Inc.

2921 S. National Ave., Springfield, MO 65804



3037 S. Kansas Expressway

3039 S. Kansas Expressway

3041 S. Kansas Expressway

Kansas Station

3037-41 S. Kansas Expressway, Springfield, MO



FOR ADDITIONAL INFORMATION CONTACT

Bill Beall Co., Inc.

2921 S. National Ave., Springfield, MO 65804

Kansas Station

3037-41 S. Kansas Expressway, Springfield, MO



Traffic Counts:

Kansas Expressway N. of Battlefield = 36,770

Kansas Expressway S. of Battlefield = 31,039

Battlefield E. of Kansas Expressway = 27,941

Battlefield W. of Kansas Expressway = 27,466

FOR ADDITIONAL INFORMATION CONTACT

Bill Beall Co., Inc.

2921 S. National Ave., Springfield, MO 65804

(417) 887-5535 email: beall@billbeall.com



THE SCIENCE OF WHERE®

Business Summary

3003 S Kansas Expy, Springfield, Missouri, 65807
Rings: 1, 3, 5 mile radii

Prepared by Esri
Latitude: 37.15962
Longitude: -93.31817

Data for all businesses in area		1 mile		3 miles		5 miles	
Total Businesses:		444	4,469	9,178			
Total Employees:		5,694	89,099	168,082			
Total Population:		9,360	78,867	175,311			
Employee/Population Ratio (per 100 Residents)		61	113	96			

by NAICS Codes	Businesses		Employees		Businesses		Employees		Businesses		Employees	
	Number	Percent	Number	Percent	Number	Percent	Number	Percent	Number	Percent	Number	Percent
Agriculture, Forestry, Fishing & Hunting	0	0.0%	0	0.0%	9	0.2%	19	0.0%	35	0.0%	269	0.2%
Mining	1	0.2%	30	0.5%	3	0.1%	7	0.1%	55	0.1%	112	0.1%
Utilities	0	0.0%	89	1.6%	1	0.0%	5	0.2%	190	0.2%	527	0.3%
Construction	29	6.5%	217	3.8%	211	4.7%	510	5.6%	1,549	1.7%	4,116	2.5%
Building Construction	8	1.8%	46	0.8%	70	1.6%	187	2.0%	339	0.4%	1,272	0.8%
Heavy/Civil Eng Construction	0	0.0%	0	0.0%	9	0.2%	25	0.3%	210	0.2%	322	0.2%
Specialty Trade Contractor	21	4.7%	171	3.0%	132	3.0%	298	3.3%	1,000	1.1%	2,522	1.5%
Manufacturing	17	3.8%	343	6.0%	79	1.8%	251	2.7%	1,882	2.1%	6,237	3.7%
Wholesale Trade	40	9.0%	986	17.3%	117	2.6%	258	2.8%	2,101	2.4%	4,074	2.4%
Durable Goods	30	6.8%	599	10.5%	90	2.0%	203	2.2%	1,168	1.3%	2,659	1.6%
Nondurable Goods	9	2.0%	381	6.7%	23	0.5%	48	0.5%	621	0.7%	1,090	0.7%
Trade Broker	2	0.5%	7	0.1%	5	0.1%	7	0.1%	312	0.3%	325	0.2%
Retail Trade	56	12.6%	737	12.9%	647	14.5%	1,210	13.2%	12,416	13.9%	17,661	10.5%
Motor Vehicle & Parts Dealers	7	1.6%	45	0.8%	64	1.4%	144	1.6%	1,632	1.8%	2,198	1.3%
Furniture & Home Furnishings Stores	3	0.7%	15	0.3%	30	0.7%	64	0.7%	248	0.3%	423	0.3%
Electronics & Appliance Stores	4	0.9%	35	0.6%	24	0.5%	46	0.5%	150	0.2%	331	0.2%
Building Material & Garden Equipment & Supplies Dealers	8	1.8%	50	0.9%	41	0.9%	84	0.9%	646	0.7%	1,242	0.7%
Food & Beverage Stores	3	0.7%	311	5.5%	60	1.3%	121	1.3%	1,303	1.5%	2,333	1.4%
Health & Personal Care Stores	5	1.1%	67	1.2%	87	1.9%	133	1.4%	1,096	1.2%	1,591	0.9%
Gasoline Stations & Fuel Dealers	6	1.4%	25	0.4%	22	0.5%	38	0.4%	113	0.1%	202	0.1%
Clothing, Clothing Accessories, Shoe and Jewelry Stores	5	1.1%	16	0.3%	101	2.3%	155	1.7%	1,072	1.2%	1,423	0.8%
Sporting Goods, Hobby, Book, & Music Stores	9	2.0%	87	1.5%	131	2.9%	259	2.8%	3,382	3.8%	4,475	2.7%
General Merchandise Stores	5	1.1%	86	1.5%	86	1.9%	164	1.8%	2,775	3.1%	3,444	2.0%
Transportation & Warehousing	7	1.6%	60	1.1%	40	0.9%	111	1.2%	499	0.6%	2,321	1.4%
Truck Transportation	3	0.7%	27	0.5%	16	0.4%	45	0.5%	90	0.1%	649	0.4%
Information	9	2.0%	117	2.0%	95	2.1%	195	2.1%	2,124	2.4%	3,848	2.3%
Finance & Insurance	26	5.9%	136	2.4%	333	7.5%	611	6.7%	2,553	2.9%	4,462	2.6%
Central Bank/Credit Intermediation & Related Activities	8	1.8%	50	0.9%	110	2.5%	200	2.2%	1,233	1.4%	2,149	1.3%
Securities & Commodity Contracts	8	1.8%	24	0.4%	72	1.6%	155	1.7%	408	0.5%	841	0.5%
Funds, Trusts & Other Financial Vehicles	10	2.3%	62	1.1%	151	3.4%	256	2.8%	912	1.0%	1,472	0.9%
Real Estate, Rental & Leasing	29	6.5%	180	3.2%	259	5.8%	570	6.2%	2,574	2.9%	4,383	2.6%
Professional, Scientific & Tech Services	49	11.0%	363	6.4%	416	9.3%	982	10.7%	2,691	3.0%	7,287	4.3%
Legal Services	11	2.5%	84	1.5%	99	2.2%	241	2.6%	609	0.7%	1,694	1.0%
Management of Companies & Enterprises	0	0.0%	0	0.0%	6	0.1%	15	0.2%	453	0.5%	501	0.3%
Administrative, Support & Waste Management Services	19	4.3%	104	1.8%	163	3.6%	345	3.8%	1,325	1.5%	3,620	2.1%
Educational Services	8	1.8%	186	3.3%	79	1.8%	214	2.3%	1,871	2.1%	9,556	5.7%

Source: Copyright 2024 Data Axle, Inc. All rights reserved. Esri Total Population forecasts for 2024.
Date Note: Data on the Business Summary report is calculated using Esri's Data allocation method which uses census block groups to allocate business summary data to custom areas.



THE SCIENCE OF WHERE®

Business Summary

3003 S Kansas Expy, Springfield, Missouri, 65807
Rings: 1, 3, 5 mile radii

Prepared by Esri
Latitude: 37.15962
Longitude: -93.31817

by NAICS Codes	Businesses		Employees		Businesses		Employees		Businesses		Employees	
	Number	Percent	Number	Percent	Number	Percent	Number	Percent	Number	Percent	Number	Percent
Health Care & Social Assistance	51	11.5%	1,215	21.3%	886	19.8%	45,494	51.1%	1,362	14.8%	67,700	40.3%
Ambulatory Health Care	33	7.4%	444	7.8%	706	15.8%	17,096	19.2%	1,031	11.2%	24,610	14.6%
Hospital	0	0.0%	215	3.8%	35	0.8%	25,036	28.1%	60	0.7%	37,413	22.3%
Nursing/Residential Care	9	2.0%	310	5.4%	41	0.9%	1,584	1.8%	63	0.7%	2,124	1.3%
Social Assistance	10	2.3%	245	4.3%	103	2.3%	1,779	2.0%	208	2.3%	3,552	2.1%
Arts, Entertainment & Recreation	6	1.4%	38	0.7%	79	1.8%	1,225	1.4%	175	1.9%	1,932	1.1%
Accommodation & Food Services	19	4.3%	326	5.7%	337	7.5%	6,028	6.8%	711	7.8%	11,794	7.0%
Accommodation	1	0.2%	15	0.3%	24	0.5%	325	0.4%	67	0.7%	1,045	0.6%
Food Services & Drinking Places	18	4.0%	312	5.5%	313	7.0%	5,703	6.4%	643	7.0%	10,749	6.4%
Other Services (except Public Administration)	63	14.2%	350	6.2%	601	13.4%	3,360	3.8%	1,291	14.1%	10,093	6.0%
Repair & Maintenance	11	2.5%	51	0.9%	94	2.1%	574	0.6%	225	2.5%	1,577	0.9%
Automotive Repair & Maintenance	8	1.8%	44	0.8%	58	1.3%	462	0.5%	153	1.7%	1,287	0.8%
Personal & Laundry Service	26	5.9%	92	1.6%	292	6.5%	1,322	1.5%	512	5.6%	2,436	1.4%
Civic and Other Orgs	26	5.9%	207	3.6%	215	4.8%	1,464	1.6%	554	6.0%	6,080	3.6%
Public Administration	5	1.1%	215	3.8%	32	0.7%	645	0.7%	168	1.8%	7,517	4.5%
Unclassified Establishments	6	1.4%	1	0.0%	76	1.7%	30	0.0%	168	1.8%	72	0.0%
Total	444	100.0%	5,694	100.0%	4,469	100.0%	89,099	100.0%	9,178	100.0%	168,082	100.0%

Source: Copyright 2024 Data Axle, Inc. All rights reserved. Esri Total Population forecasts for 2024.
Date Note: Data on the Business Summary report is calculated using Esri's Data allocation method which uses census block groups to allocate business summary data to custom areas.



THE SCIENCE OF WHERE®

Business Summary

3003 S Kansas Expy, Springfield, Missouri, 65807
Rings: 1, 3, 5 mile radii

Prepared by Esri
Latitude: 37.15962
Longitude: -93.31817

by SIC Codes	Businesses		Employees		Businesses		Employees		Businesses		Employees	
	Number	Percent	Number	Percent	Number	Percent	Number	Percent	Number	Percent	Number	Percent
Agriculture & Mining	6	1.4%	67	1.2%	77	1.7%	425	0.5%	165	1.8%	1,150	0.7%
Construction	26	5.9%	194	3.4%	187	4.2%	1,287	1.4%	465	5.1%	3,690	2.2%
Manufacturing	13	2.9%	232	4.1%	66	1.5%	1,667	1.9%	215	2.3%	6,209	3.7%
Transportation	11	2.5%	76	1.3%	72	1.6%	815	0.9%	175	1.9%	2,883	1.7%
Communication	3	0.7%	60	1.1%	52	1.2%	1,587	1.8%	93	1.0%	2,187	1.3%
Utility	1	0.2%	91	1.6%	10	0.2%	277	0.3%	21	0.2%	697	0.4%
Wholesale Trade	40	9.0%	986	17.3%	117	2.6%	2,101	2.4%	259	2.8%	4,082	2.4%
Retail Trade Summary	80	18.0%	1,078	18.9%	985	22.0%	18,291	20.5%	1,901	20.7%	28,746	17.1%
Home Improvement	8	1.8%	50	0.9%	45	1.0%	677	0.8%	88	1.0%	1,274	0.8%
General Merchandise Stores	1	0.2%	64	1.1%	53	1.2%	2,590	2.9%	99	1.1%	3,184	1.9%
Food Stores	7	1.6%	323	5.7%	92	2.1%	1,635	1.8%	171	1.9%	2,795	1.7%
Auto Dealers & Gas Stations	12	2.7%	67	1.2%	84	1.9%	1,734	1.9%	178	1.9%	2,381	1.4%
Apparel & Accessory Stores	4	0.9%	15	0.3%	85	1.9%	1,004	1.1%	129	1.4%	1,301	0.8%
Furniture & Home Furnishings	6	1.4%	45	0.8%	53	1.2%	412	0.5%	119	1.3%	823	0.5%
Eating & Drinking Places	18	4.0%	312	5.5%	297	6.7%	5,505	6.2%	615	6.7%	10,450	6.2%
Miscellaneous Retail	24	5.4%	202	3.5%	276	6.2%	4,734	5.3%	502	5.5%	6,539	3.9%
Finance, Insurance, Real Estate Summary	48	10.8%	321	5.6%	573	12.8%	5,528	6.2%	1,153	12.6%	9,212	5.5%
Banks, Savings & Lending Institutions	6	1.4%	43	0.8%	108	2.4%	1,248	1.4%	206	2.2%	2,195	1.3%
Securities Brokers	8	1.8%	24	0.4%	67	1.5%	366	0.4%	147	1.6%	780	0.5%
Insurance Carriers & Agents	10	2.3%	62	1.1%	150	3.4%	910	1.0%	255	2.8%	1,470	0.9%
Real Estate, Holding, Other Investment Offices	24	5.4%	192	3.4%	247	5.5%	3,005	3.4%	545	5.9%	4,767	2.8%
Services Summary	203	45.7%	2,373	41.7%	2,224	49.8%	56,457	63.4%	4,398	47.9%	101,658	60.5%
Hotels & Lodging	1	0.2%	15	0.3%	24	0.5%	325	0.4%	67	0.7%	1,045	0.6%
Automotive Services	9	2.0%	51	0.9%	72	1.6%	574	0.6%	196	2.1%	1,546	0.9%
Movies & Amusements	7	1.6%	50	0.9%	94	2.1%	1,178	1.3%	207	2.3%	1,999	1.2%
Health Services	40	9.0%	1,035	18.2%	766	17.1%	43,294	48.6%	1,125	12.3%	63,447	37.8%
Legal Services	9	2.0%	43	0.8%	87	1.9%	478	0.5%	220	2.4%	1,520	0.9%
Education Institutions & Libraries	6	1.4%	159	2.8%	61	1.4%	1,951	2.2%	187	2.0%	9,920	5.9%
Other Services	131	29.5%	1,020	17.9%	1,120	25.1%	8,657	9.7%	2,396	26.1%	22,180	13.2%
Government	5	1.1%	215	3.8%	30	0.7%	636	0.7%	165	1.8%	7,498	4.5%
Unclassified Establishments	6	1.4%	1	3.8%	76	1.7%	30	0.7%	168	1.8%	72	4.5%
Totals	444	100.0%	5,694	100.0%	4,469	100.0%	89,099	100.0%	9,178	100.0%	168,082	100.0%

Source: Copyright 2024 Data Axle, Inc. All rights reserved. Esri Total Population forecasts for 2024.
Date Note: Data on the Business Summary report is calculated using Esri's Data allocation method which uses census block groups to allocate business summary data to custom areas.



Disclaimer:

The information provided in this document is deemed reliable but not guaranteed and is subject to change without notice. Bill Beall Co. reserves the right to adjust prices, availability, or remove products or services from the market at its discretion. All transactions are contingent upon the execution of definitive agreements, and Bill Beall Co. makes no guarantees regarding the accuracy or completeness of the information.

This document is for informational purposes only and is not an offer to sell, purchase, or engage in any transaction. Bill Beall Co. disclaims any liability for the information provided and encourages recipients to conduct their own independent due diligence. Any estimates or assumptions may not be accurate, and Bill Beall Co. makes no representation regarding future outcomes. Photos are the property of their respective owners, and unauthorized use is prohibited.

Bill Beall Co. reserves the right to reject any offers or terminate discussions at its sole discretion. No legal obligation exists until a final, fully executed agreement is signed. By submitting an offer, the prospective party agrees to release Bill Beall Co. from any liability. Legal, tax, and title matters should be addressed with appropriate professionals.



2921 S. National Ave., Springfield, MO 65804

(417) 887-5535 email: beall@billbeall.com